

# UPGRADING YOUR TR-CPQ SERIES FIRMWARE

**Before applying Build 89R your radio must be running Build 84 or higher.**



**Warning:** Before applying any versions of firmware please read and understand this entire document. If you encounter problems with the new firmware you can seek help from the Support Team. You should only perform a firmware upgrade during supported hours (7am to 5pm PST, Monday to Friday) in case you need emergency assistance. If you have any questions, please call or email us before starting the upgrade process. It is advised that network administrators document their configuration before proceeding with the update, then after the upgrade manually re-enter the information if required.

**Important:** Firmware may become unusable if inappropriately applied or the connection is broken during the upgrade. Ensure no interruption during upgrade. If the connection is broken or power goes off during upgrade, the unit may become inoperative! **Once this package is applied, you can not revert to earlier versions!**

---

## This package contains the following:

### Firmware

TrCPQ-89CPQ.bin

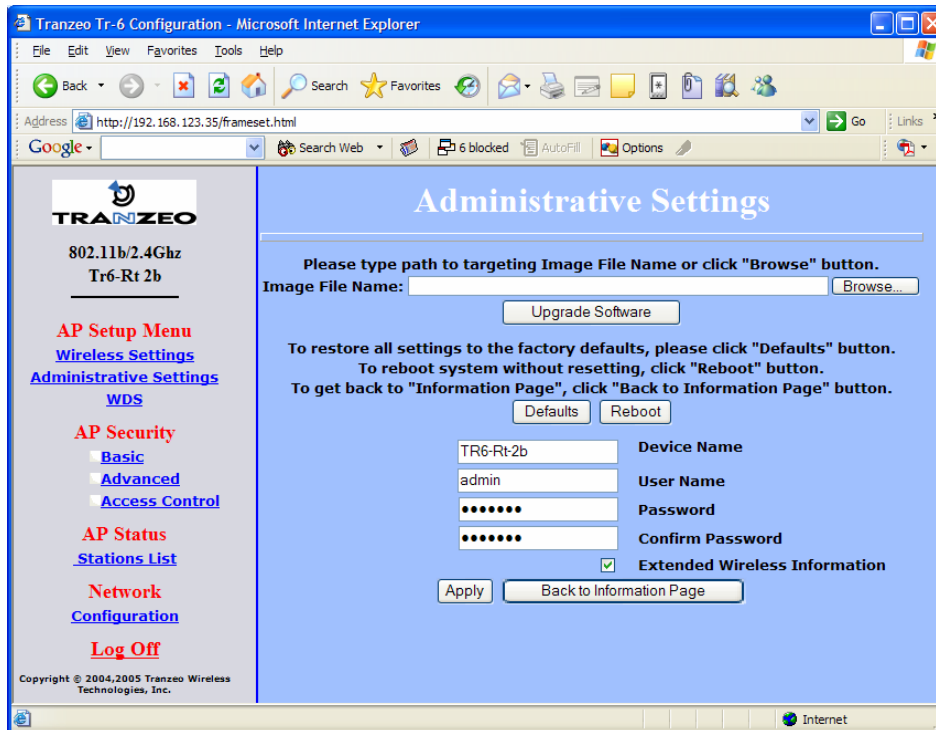
### Documents

- 1) Upgrading your Firmware build 89R and Release Notes.pdf (this document)

# UPGRADING YOUR TR-CPQ SERIES FIRMWARE

## Upgrading the TR-CPQ firmware to Build 89

1. Log into the radio and go to the *Administrative Settings* page.



2. Click *Browse* to browse to the location of the upgrade file ***TrCPQ-89CPQ***. Then click the upgrade software button to apply the firmware. The radio will upgrade the firmware and then reboot. All the LEDs including the Power LED will go blank during the upgrade for up to 30 seconds. This is normal.
3. Your Radio is now upgraded and will continue to pass traffic after it reboots. However, to complete the process you must access the HTML interface.
4. You now need to set the correct distance for your link in the wireless settings page.

**See the next page for Release Notes**

# UPGRADING YOUR TR-CPQ SERIES FIRMWARE

## Changes in Build 89

### *General Changes*

- Fixed a rare but critical memory leak caused when 802.11d or 802.11h AP's were seen
- Updated Irish Domain to add UK-style 5.8 channels
- Rearranged memory mapping to improve speed
- Increase AP scan list & Peer list size
- Adding validation to Antenna Gain and ACK tuning values
- Corrected issue causing QOS speed to be off by one in the list

## Changes in TrCPQ-88CPQ\_SDev99

### *General Changes*

- Added code to squelch Broadcast storms created by some Brands of Routers not being aware of L2.5 bridging.
- Added code to squelch excessive ARP requests by some brands of Routers
- Added Code to fix rare issue of CPQ's taking up to 30 seconds to associate to some brands of AP when the AP is on channel 8 or higher.

## Changes in Build 88

### *General Changes*

- Adjusted default power to 23 db
- Several changes to improve production process

## Changes in Build 86

### *General Changes*

- Improved user interface based on customer feedback
- RTS value defaults to 3000
- Fragmentation threshold value defaults to 2346

## Changes in Build 85

### *General Changes*

- Improved throughput.
- Improved signal strength reporting
- Adds ability to turn off the LEDs on the unit