



UPGRADING THE TRANZEO TR-CPE/TR-CPE-80 TO SUPPORT WIRELESS UPGRADES

REVISION 1.0
THURSDAY, JANUARY 6, 2005

TRANZEO WIRELESS QUICK START GUIDE

UPGRADING THE TRANZEO TR-CPE/TR-CPE-80 FIRMWARE

This document is intended to explain to experienced network administrators how to upgrade the Tranzeo TR-CPE/TR-CPE-80 Firmware. Throughout the document, the term TR-CPE will be used to refer to TR-CPE/TR-CPE-80. If you have any questions, please call or email us before starting the upgrade process. With the introduction of the newest firmware, future firmware upgrades for the TR-CPE/TR-CPE-80 can now be upgraded wirelessly.

Note: Existing firmware can only be upgraded from the LAN side of the radio. After upgrading the firmware to 2.00.15b or later, future upgrades can be done wirelessly using the Firmware Upgrade Utility.

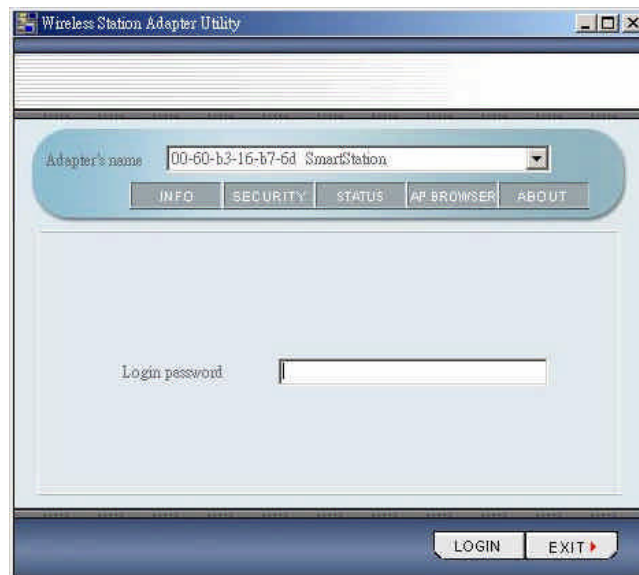
Utility Installation

Wireless Station Adapter Utility

The following gives instructions guiding you through the installations of the Wireless Station Adapter Utility.

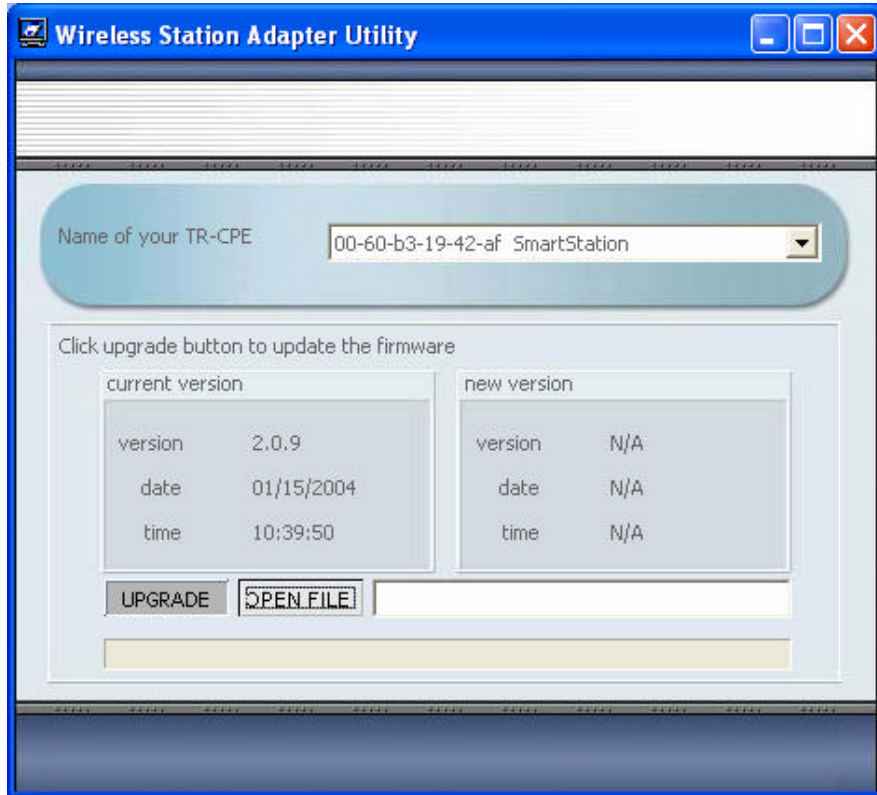
1. Uninstall any previous versions of the Wireless Station Adapter Utility and Firmware Upgrade Utility
2. Unzip the contents of the file, TR-CPE Wireless Upgrade.zip to your computer.
3. Open the TR-CPE Upgrade Utility folder.
4. Double click on the "Setup.exe" icon.
5. Follow the on-screen instructions to install the Wireless Station Adapter Utility and Firmware Upgrade Utility.
6. Execute the TR-CPE Utility, and it will browse for all of the TR-CPE's available on the network. Make note of the radio that is connected on the LAN side, and not another radio on the network.
7. Select the TR-CPE you want to upgrade, enter the password and click the **LOGIN** button. Verify that the radio you want to upgrade is the one you are looking at.
8. Close the TR-CPE Utility. Execute the Firmware Upgrade Utility (FW in the Start Menu). It will display all the found TR-CPE's. Select the radio to be upgraded from the drop down menu, enter the password and click the **LOGIN** button.

Note: The default password to get access to the TR-CPE is "default". If you do not know the password, please contact support@tranzeo.com with the MAC address of the TR-CPE.

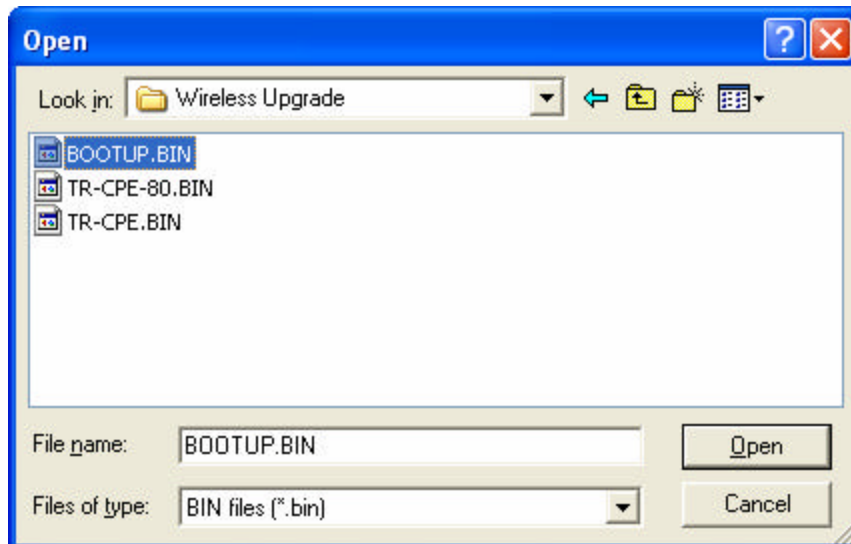


TRANZEO WIRELESS QUICK START GUIDE

9. The screen will show the existing firmware version on the radio on the left.



10. Click on **OPEN FILE**, select the *BOOTUP.BIN*, and then **Open**. This is the same file to load for the TR-CPE and TR-CPE-80.



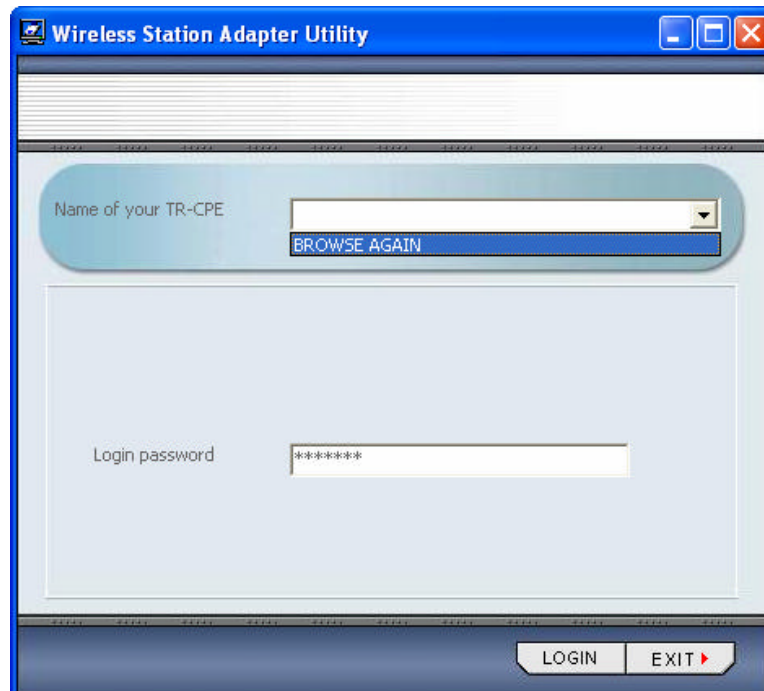
TRANZEO WIRELESS QUICK START GUIDE

11. The screen will now show the version of the Boot Loader file on the right side. Click on **UPGRADE**.



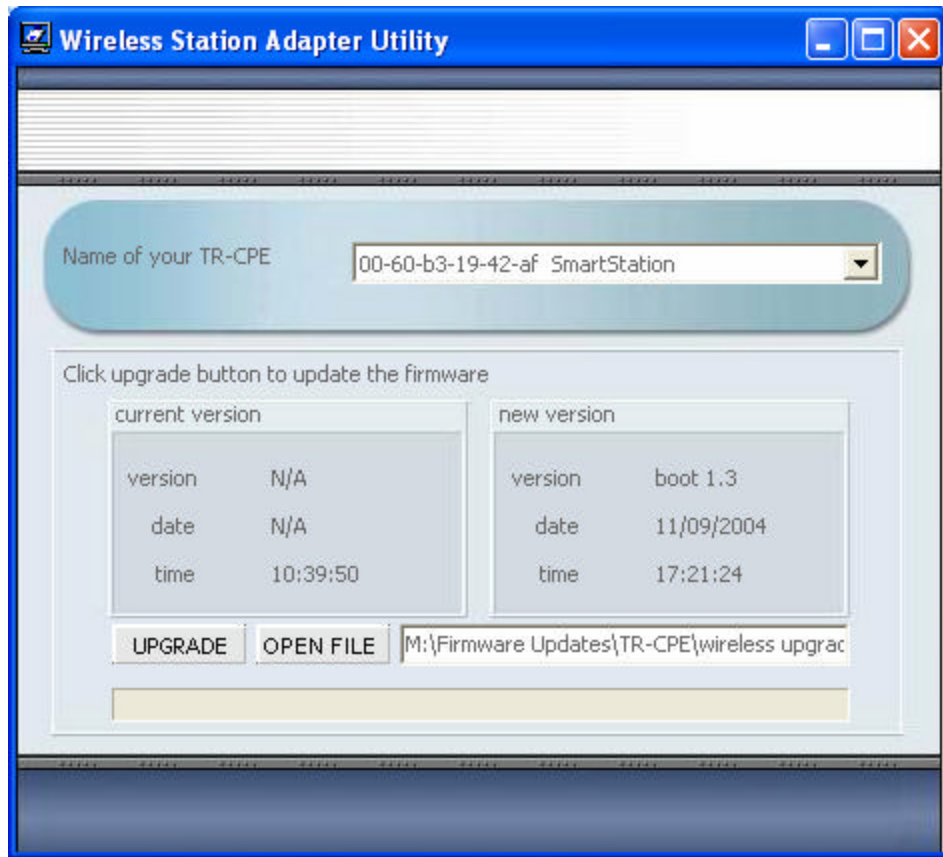
12. The progress bar will complete and the radio will be rebooted. **DO NOT REMOVE RADIO FROM POWER.**

13. If the radio doesn't appear in the drop down box on the login screen, or a different radio appears, select the drop down box and choose **BROWSE AGAIN**.



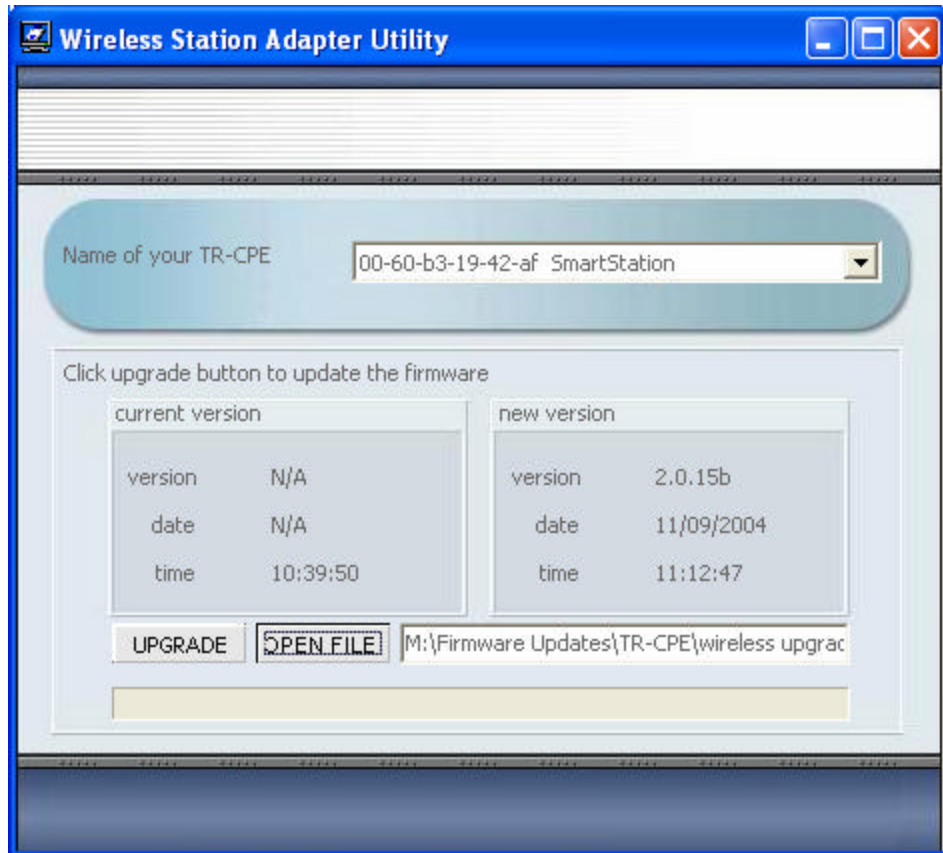
TRANZEO WIRELESS QUICK START GUIDE

14. Login again to the radio, and you should see a screen like this:



TRANZEO WIRELESS QUICK START GUIDE

15. Select **OPEN FILE** again, and select the *TR-CPE.BIN* or *TR-CPE-80.BIN* for your model. It will now display the version of the loaded firmware. Click **UPGRADE**.



16. Future firmware updates will come in two forms; as an *upgrade.bin* for upgrading on the LAN side of the radio, and *upgrade.img* that can be upgraded wirelessly or from the LAN.

Technical Support

You can find the most recent software and updated user documentation updated periodically on the Tranzeo Web site. If you have difficulty resolving the problem while upgrading, please contact your Tranzeo dealer for support.



TRANZEO WIRELESS QUICK START GUIDE

This page left deliberately blank



Revision 01/06/05

20155 Stewart Crescent,
Maple Ridge, B.C. Canada V2X 0T6
Phone (604) 460-6002 Fax (604) 460-6005
www.tranzeo.com
Page 7 of 7